

YEAR 2013

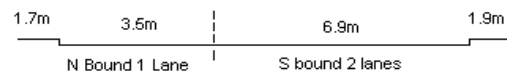
COVERAGE (B) STATION 2202

ROAD NETWORK MAJOR

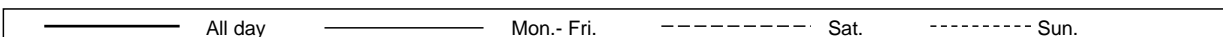
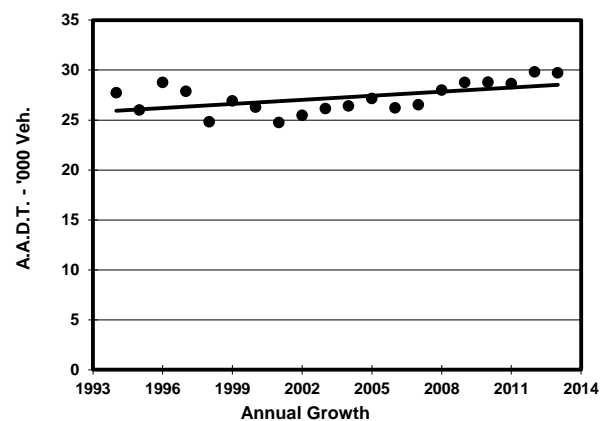
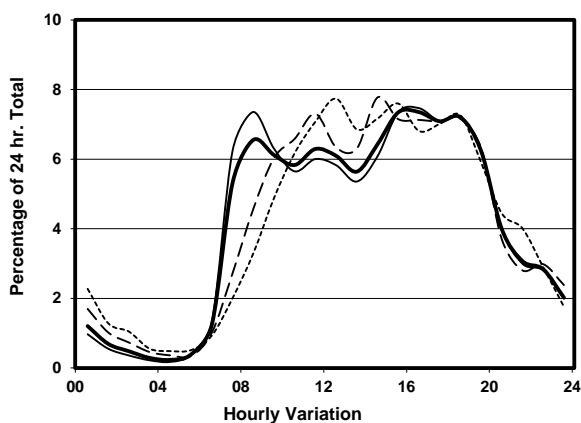
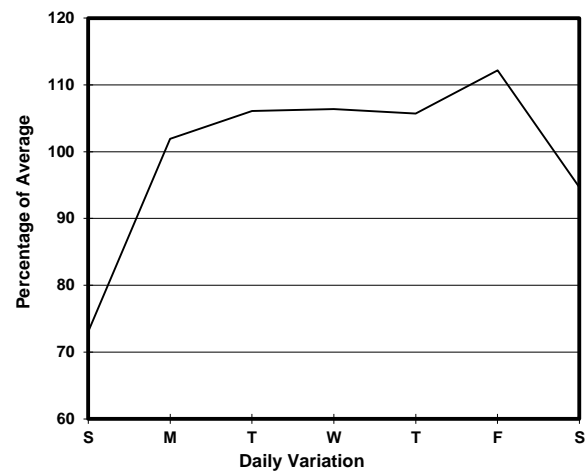
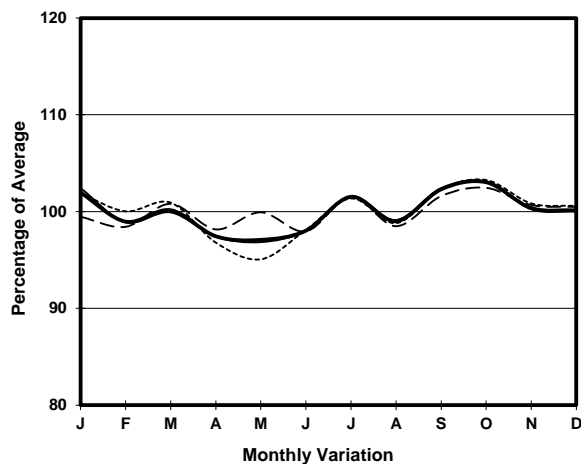
ROAD TYPE DISTRICT DISTRIBUTOR

LINK

WONG NAI CHUNG GAP RD (from STUBBS RD FO
<H119> SOUTHERN END to REPULSE BAY RD)



1. TRAFFIC FLOW VARIATION AND GROWTH



2. TRAFFIC CHARACTERISTICS (BY DIRECTION)

Parameter	All - Day	Mon. - Fri.	Sat.	Sun.
SOUTH BOUND				
A.A.D.T.	13580	14580	12910	10730
R 12 / 24 - %	77.6	78	76.2	75.8
R 16 / 24 - %	93.6	94	92.6	92.3
AM Peak Hour	0900-1000	0700-0800	0900-1000	0900-1000
One-way flow at AM peak hour	800	1010	810	550
T - % (AM)	-	11.9	-	-
PM Peak Hour	1600-1700	1600-1700	1600-1700	1600-1700
One-way flow at PM peak hour	1000	1050	1020	780
T - % (PM)	-	3.3	-	-
Prop.of commercial vehicles - 16 hr.	-	7.2	-	-
NORTH BOUND				
A.A.D.T.	16150	17560	15650	11310
R 12 / 24 - %	77.1	77.9	76.1	72
R 16 / 24 - %	93.3	94	91.5	90
AM Peak Hour	0800-0900	0800-0900	0900-1000	0900-1000
One-way flow at AM peak hour	1150	1440	920	520
T - % (AM)	-	7.8	-	-
PM Peak Hour	1800-1900	1600-1700	1800-1900	1800-1900
One-way flow at PM peak hour	1200	1350	1140	880
T - % (PM)	-	7.3	-	-
Prop.of commercial vehicles - 16 hr.	-	5.6	-	-

3. OTHER INFORMATION AND COMMENT

Coverage (B) Station 2202
Year 2013

4. Vehicle classification and occupancy - Monday to Friday

Time		Class of vehicle									
		Motor Cycle	Private Car	Taxi	Private LB	PLB	Goods veh.		Non Fr. Bus	Fr. Bus	
							Light	M & H		SD	DD
0700-0800	Pro	5.7	44.7	30.5	4.7	1.3	2.5	0.3	7.9	1.0	1.4
	Ocp	1.0	1.5	2.0	6.3	12.3	1.5	1.0	17.8	26.2	34.1
0800-0900	Pro	2.1	67.1	14.3	2.0	0.9	3.9	0.7	7.9	0.5	0.6
	Ocp	1.0	1.4	1.9	5.1	11.4	2.0	1.5	11.9	22.2	27.6
0900-1000	Pro	2.2	65.9	17.3	1.0	0.5	9.3	0.3	2.2	0.6	0.6
	Ocp	1.0	1.4	1.9	1.8	11.3	1.8	1.0	10.2	10.5	31.5
1000-1100	Pro	1.4	53.0	27.3	0.7	0.0	13.4	0.2	2.6	0.7	0.5
	Ocp	1.0	1.2	1.7	1.0	0.0	1.5	2.0	10.5	10.0	16.6
1100-1200	Pro	1.8	65.3	14.7	0.4	0.4	10.2	0.7	5.3	0.6	0.5
	Ocp	1.0	1.4	2.0	1.5	7.0	1.7	1.3	14.2	11.7	16.9
1200-1300	Pro	2.4	60.1	20.6	2.2	0.7	8.9	0.2	3.9	0.5	0.6
	Ocp	1.0	1.5	1.7	4.3	6.0	1.6	2.0	25.2	10.3	34.1
1300-1400	Pro	2.2	56.1	21.1	0.7	0.7	13.0	1.7	3.2	0.7	0.6
	Ocp	1.0	1.4	1.6	9.0	9.7	1.7	1.4	19.3	9.5	27.8
1400-1500	Pro	2.4	58.4	17.5	0.9	0.9	11.4	1.8	5.9	0.5	0.4
	Ocp	1.1	1.5	1.8	4.3	6.8	1.8	1.1	15.8	17.7	29.7
1500-1600	Pro	3.2	56.3	22.5	2.5	0.4	7.1	1.2	5.8	0.4	0.7
	Ocp	1.1	1.5	2.0	6.7	8.5	1.5	1.1	19.2	20.6	27.3
1600-1700 Peak hour	Pro	1.9	61.3	19.1	2.3	0.7	9.0	0.4	4.1	0.5	0.7
	Ocp	1.1	1.6	2.0	5.8	8.3	1.9	2.0	8.7	21.3	31.8
1700-1800	Pro	3.1	63.7	19.3	1.5	0.6	5.0	0.4	5.2	0.4	0.8
	Ocp	1.3	1.4	2.3	3.8	14.0	2.1	1.0	21.4	23.4	33.4
1800-1900	Pro	3.2	60.9	23.2	1.1	0.9	3.6	0.8	5.1	0.5	0.7
	Ocp	1.1	1.5	2.5	3.7	11.6	1.8	1.3	19.9	25.2	41.0
1900-2000	Pro	2.5	55.6	33.4	0.2	1.0	1.9	0.0	4.1	0.5	0.8
	Ocp	1.1	1.6	2.0	1.0	13.4	1.4	0.0	22.9	22.1	27.3
2000-2100	Pro	2.3	49.6	42.8	0.0	1.0	0.3	0.6	2.3	0.6	0.6
	Ocp	1.1	1.6	1.6	0.0	7.7	1.0	1.0	21.4	9.6	21.0
2100-2200	Pro	0.5	47.5	47.5	0.0	1.0	0.5	0.0	1.6	0.7	0.8
	Ocp	1.0	1.4	2.5	0.0	9.0	1.0	0.0	20.3	8.8	13.0
2200-2300	Pro	4.0	46.7	46.2	0.0	1.0	0.0	0.0	0.5	0.8	0.8
	Ocp	1.0	1.5	1.6	0.0	9.0	0.0	0.0	6.0	10.2	11.5
16 hours	Pro	2.5	58.6	23.6	1.4	0.7	6.8	0.6	4.5	0.6	0.7
	Ocp	1.1	1.5	2.0	5.0	10.1	1.7	1.3	16.8	16.7	28.5

Legend

Pro. Proportion of vehicles in % (Sum may not add up to 100% due to figure rounding)
Ocp. Average occupancy of vehicles
M&H Medium and Heavy